

Weather in ArcGIS Pro

Fast acquisition and computation of data is the key element for many business processes, no matter whether we are dealing with data from weather stations and forecasting, or even satellite and radar images. In addition to general parameters like temperature or wind speed the **Meteomatics Weather-API also includes specific parameters** like evaporation and Long-Term Forecasts (7 months).

Despite of extensive data volume the user-friendliness is our main target **the response time for complex requests for several periods or geographical domains onyl takes a few milliseconds**. The data is available in multiple formats and can be easily integrated in existing workflows or GIS programs.

Contact

Switzerland: +41 (0) 71 272 66 50

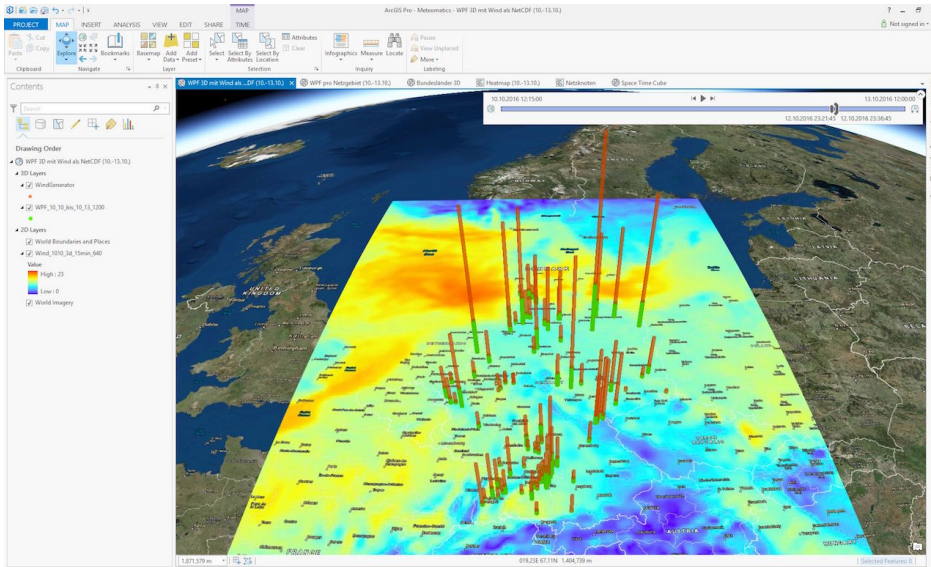
Germany: +49 (0) 30 200 74 280

sales@meteomatics.com

de en

[API Documentation](#)

Weather in ArcGIS Pro:



Weather in ArcGIS Maps for Office:

