

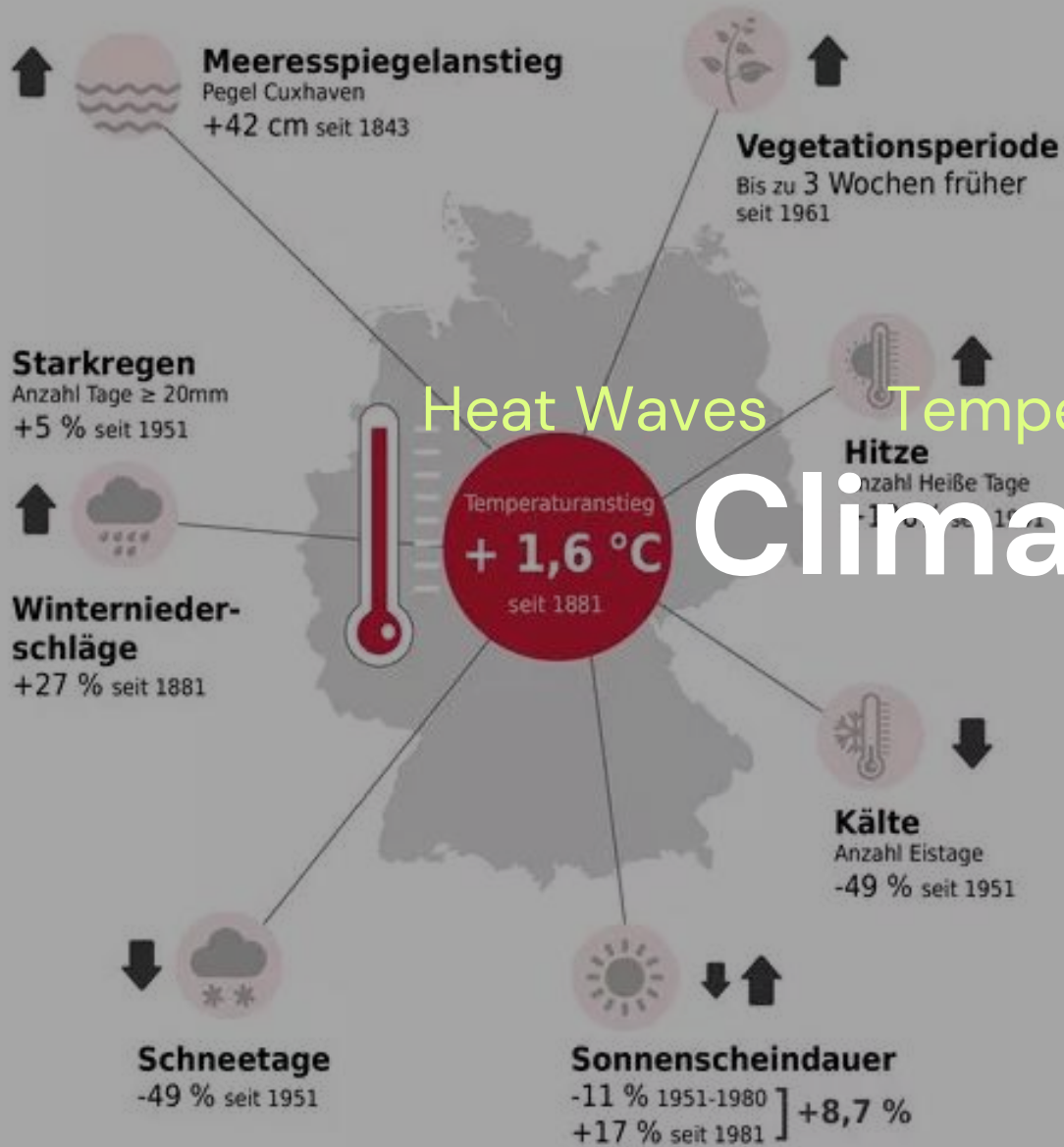


Climate Change

Resilience

Extreme Events

# Red Monkey



Heat Waves

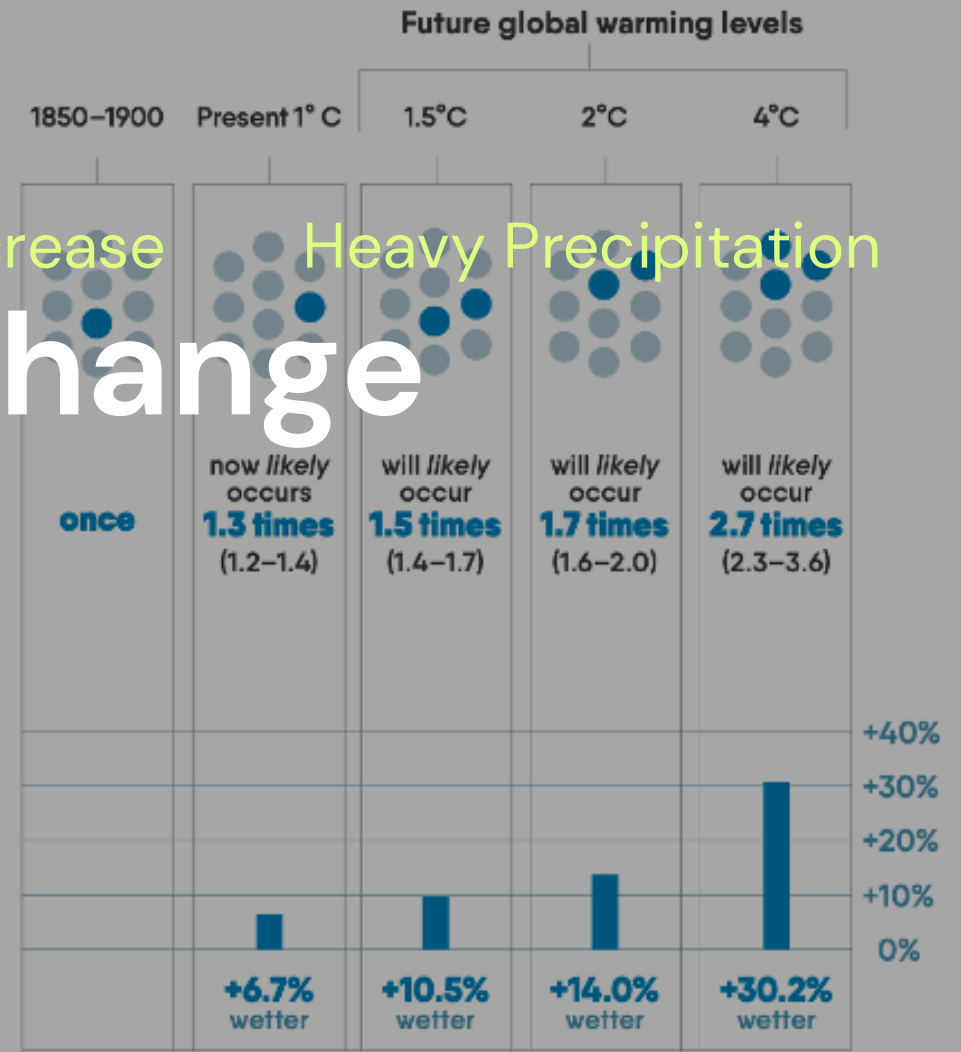
Temperature Increase

Heavy Precipitation

# Climate Change

## Heavy precipitation over land 10-year event

Frequency and increase in intensity of heavy 1-day precipitation event that occurred **once in 10 years** on average in a climate **without human influence.**



Klimaveränderung in Deutschland (Bildquelle: DWD)



High Performance  
Computing

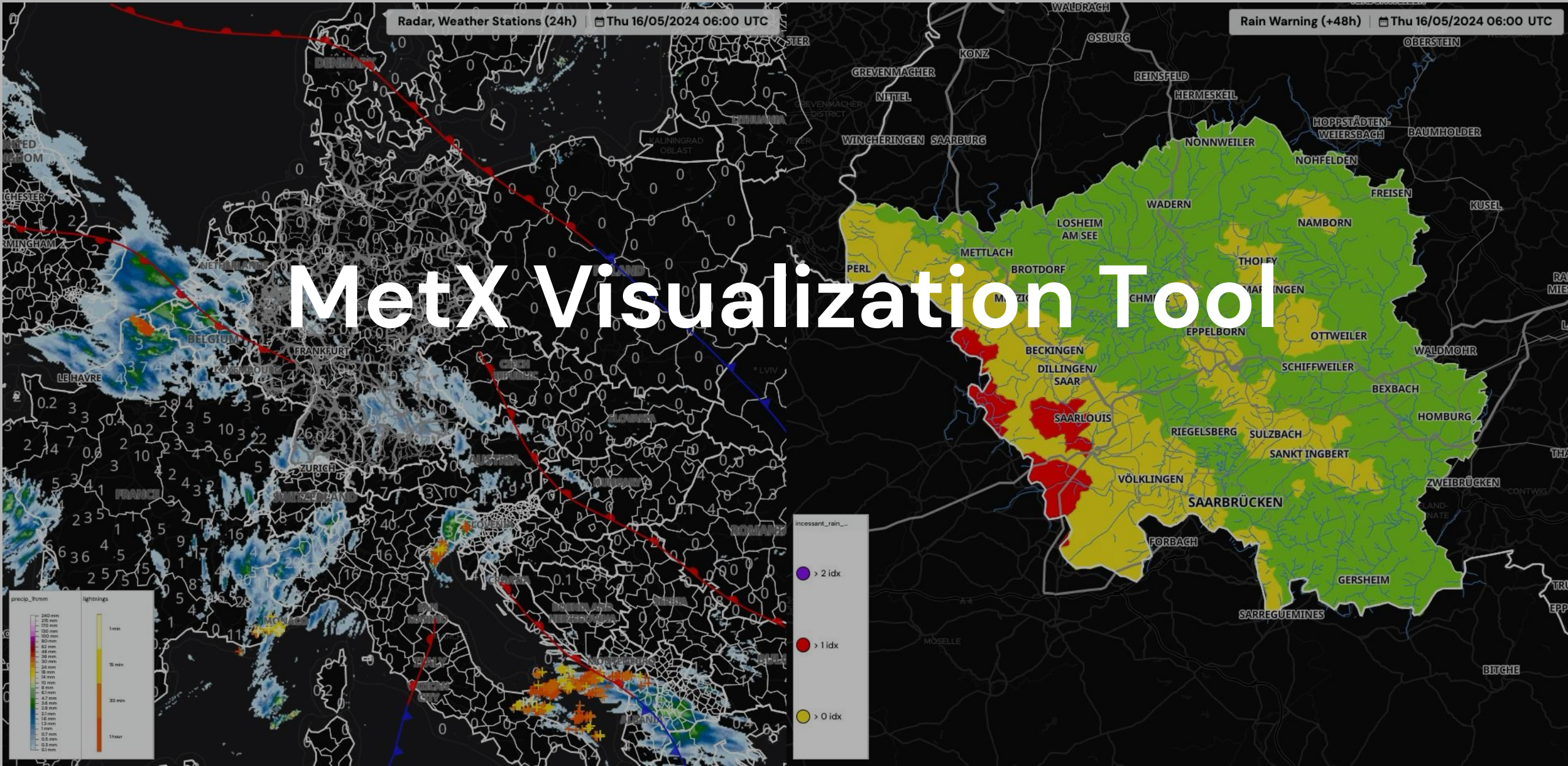


Stargate to  
Weather World



METFLIX of  
Endless Possibilities

# Weather Resilience 2.0



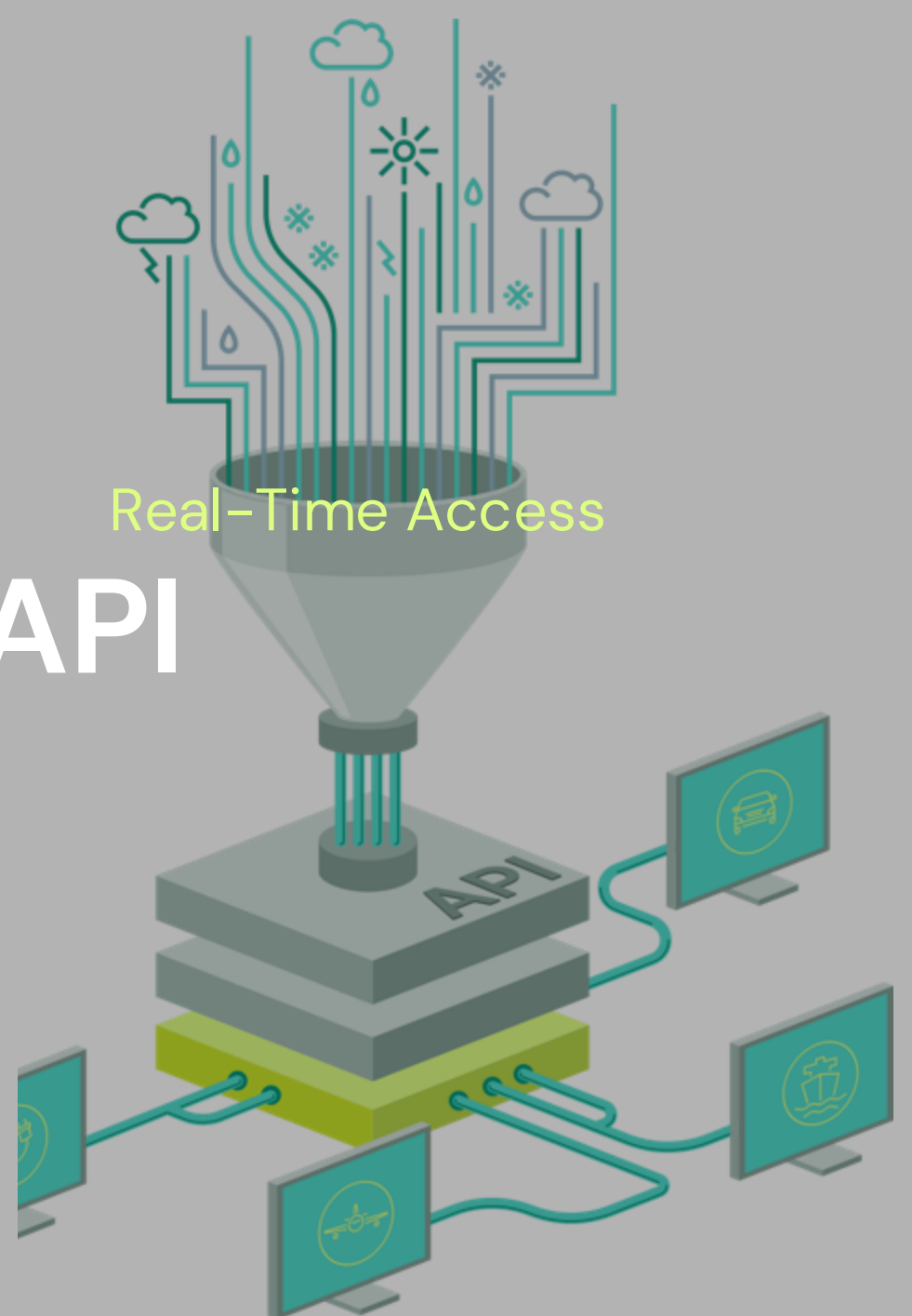


20 Petabyte

5-dimensional Room

Real-Time Access

# Weather API



Dr. Martin Fengler  
CEO / Founder

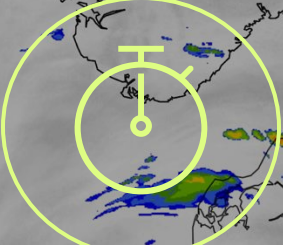
Single API Endpoint

"The Weather API is the centralized access point to a database of global weather data — for any application, industry, institution and national weather service — providing faster and more efficient access compared to traditional weather database systems."

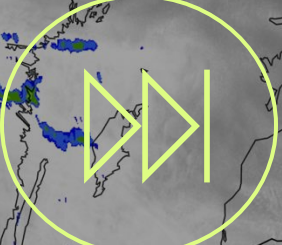
[Our weather solutions](#)



1km resolution



Hourly Updates



+72h in advance



15min values

# EURO1k

60.000 CPU

1.000TB/mo.

275 MWh/mo.

20 Mio. grid points

**EURO1k**



1

Severe  
Weather Warning

2

24/7/365  
Weather Monitoring

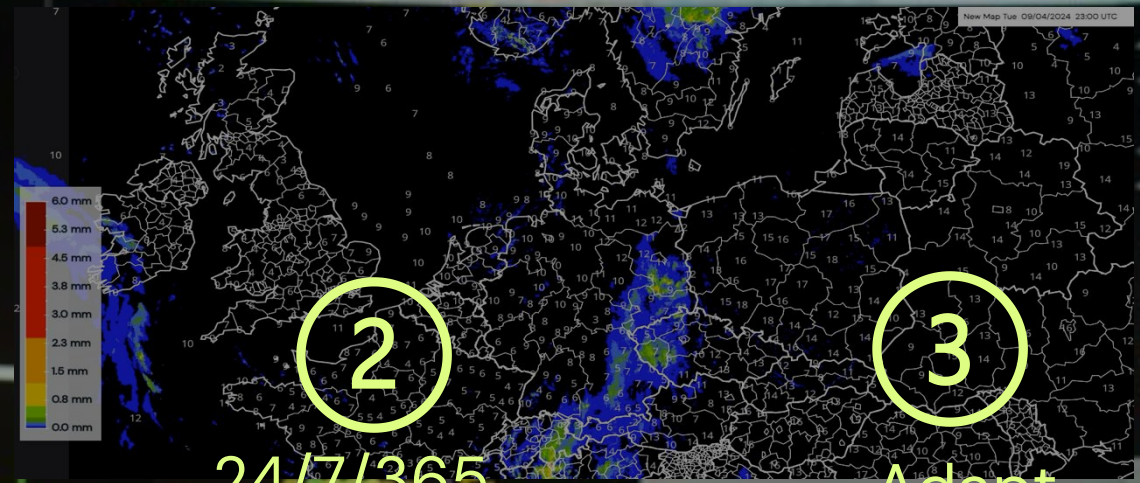
3

Adapt  
Grid Operations

4

Activate  
Emergency Planning

# Increase Situational Awareness



**e-on**  
Group Innovation

**meteo  
matics**

Weather Data Digitalization

Security of Power Supply

# Climate Resilience



**Markus Schwab**

Innovation Expert &  
Climatologist

[mschwab@meteomatics.com](mailto:mschwab@meteomatics.com)

<https://www.linkedin.com/in/markus-schwab-79a24b77>



Catchment Definition  
for network stations

Threshold Analysis  
of Historical Events

Setup Alerts  
for network stations

# Development Flash Flood Warning

